

description	issue date
Design Development	05/03/2019
Final Planned Development	07/25/2019
Issue For 50% CD	09/20/2019
Issue For Permit	12/18/2019
Issue For Bid	1/6/2020
ASI #9	6/30/2020
Issue For Review	6/1/2021

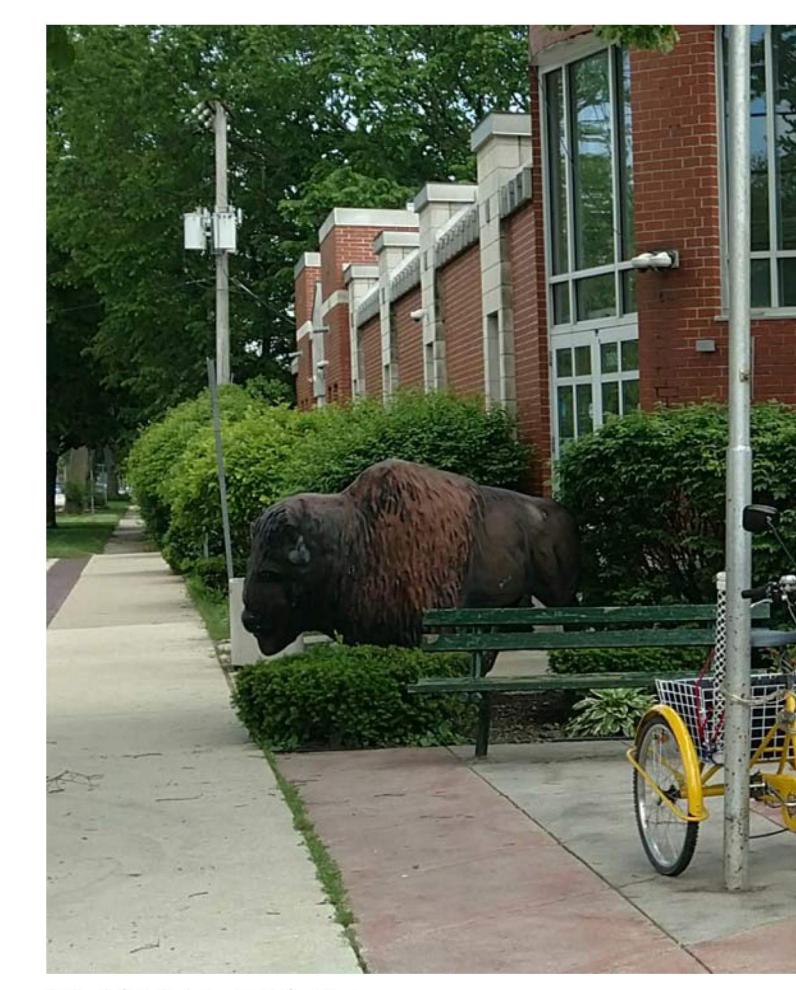
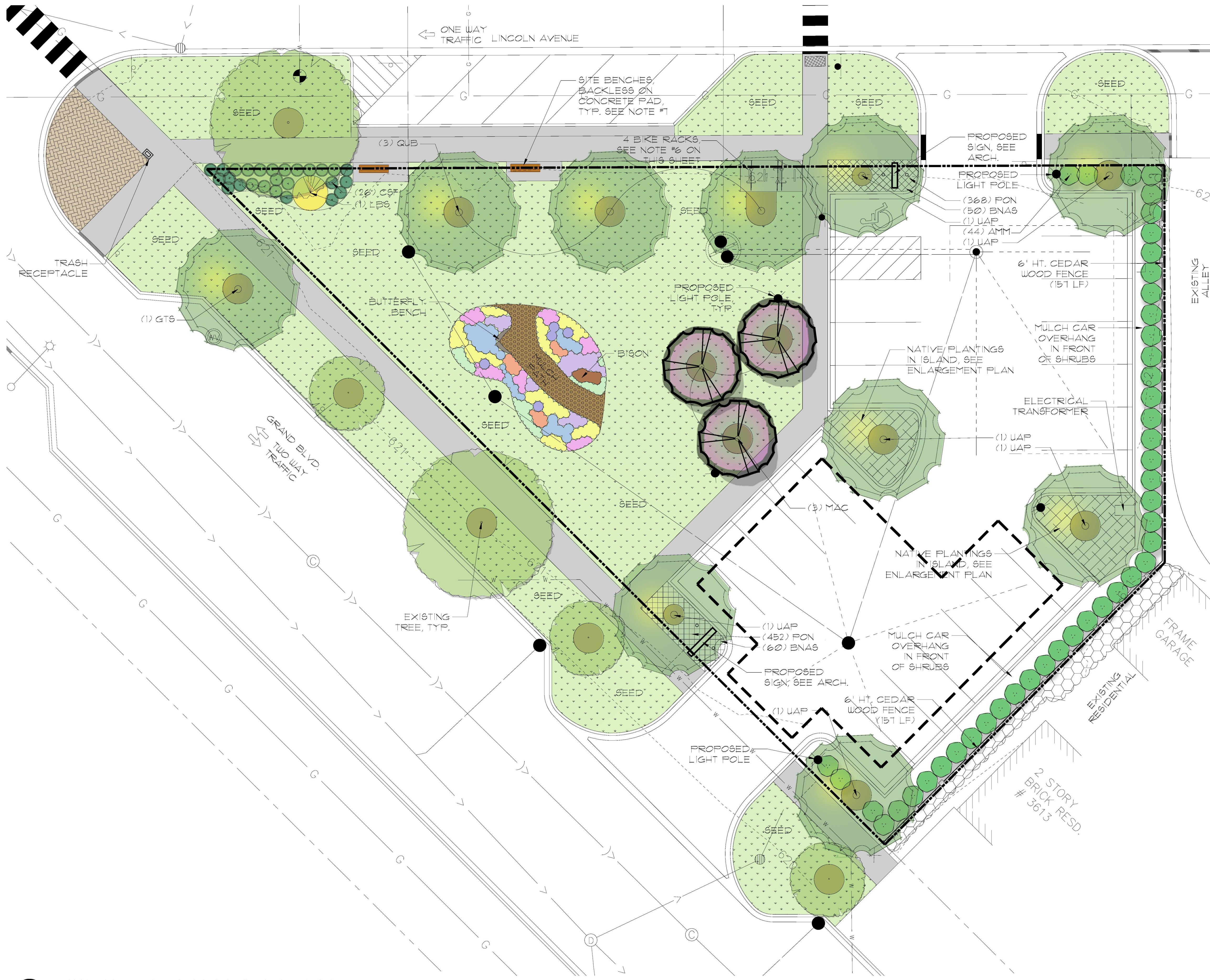


**PLANTING NOTES:**

- SEE SHEET L-300 FOR SITE DETAILS INCLUDING WOOD FENCE DETAILS.
- SEE SHEET L-301 FOR SITE FURNITURE DETAILS.
- SEE SHEET L-302 FOR LANDSCAPE PLANTING DETAILS.
- SEE SHEET L-303 FOR LANDSCAPE PLANT SCHEDULE AND NOTES.
- PROVIDE 6" DIA. MULCH RINGS FOR ALL PROPOSED AND EXISTING TREES IN PARKWAYS.
- ALIGN BIKE RACKS IN CENTER OF CONCRETE PAD. SPACE RACKS 3' O.C. AS SHOWN.
- FOR SITE BENCHES (BACKLESS) LAYOUT, SEE DETAIL ON 2/L-301.

**LEGEND:**

- PROPOSED SHRUBS AND PERENNIALS, SEE ENLARGEMENT PLANS ON SHEET L-204
- PROPOSED SHADE TREE
- PROPOSED ORNAMENTAL TREE
- EXISTING TREES
- PROPERTY LINE



**Butterfly Garden Landscape Plan**

drawing:

project:  
**linda sokol francis**  
**brookfield library**  
3541 park avenue,  
brookfield, IL 60513

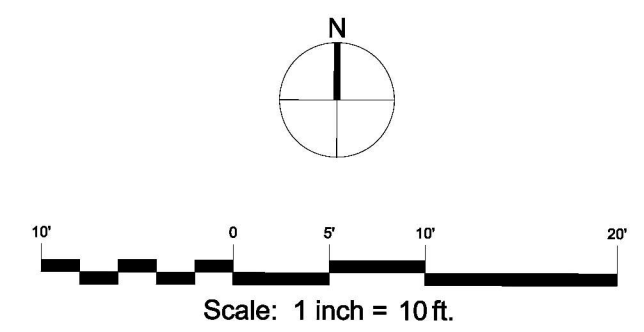
project number:	1805
drawn by:	AW
approved by:	TWR
drawing scale:	1"=10'-0"
date issued:	-

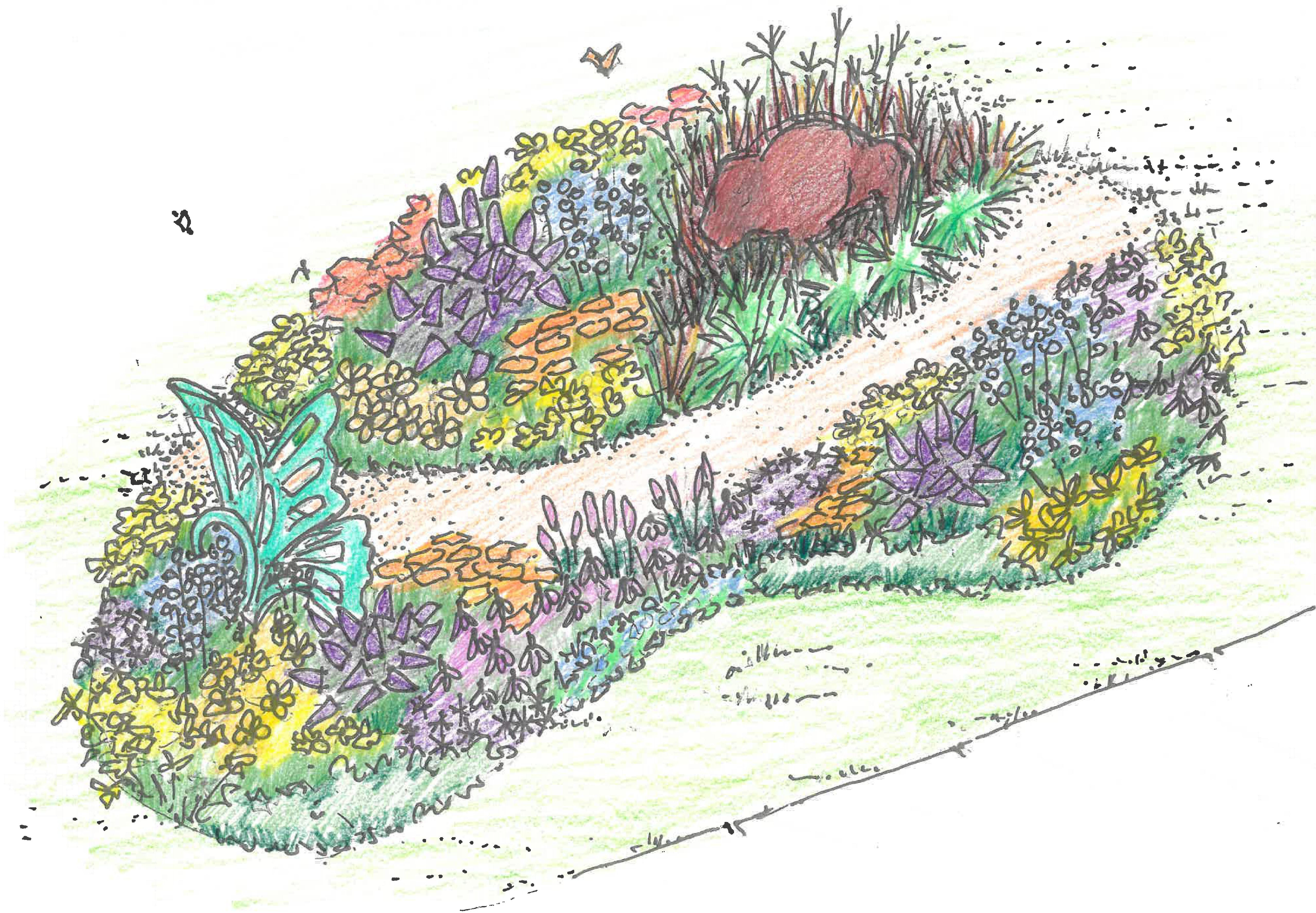
sheet number:

**LSK-1**

sheet of

**1** BUTTERFLY GARDEN LANDSCAPE PLAN  
SCALE: 1" = 10'-0"





**product**  
 architecture + design  
 811 w. evergreen ave.  
 suite 405  
 chicago, il 60642  
 ph: (312) 202-0701  
 fax: (866) 857-7265

Revision	Date
Design Development	11/12/11
Final Design Development	11/12/11
Plan for Bid	11/12/11
Plan for Permit	11/12/11
Plan for Bid	11/12/11
Plan for Bid	11/12/11
Plan for Bid	11/12/11



drawing:  
**Butterfly Garden Perspective**

project:  
**linda sokol francis  
 brookfield library**  
 3541 park avenue,  
 brookfield, IL 60513

sheet number:	202
drawn by:	TR
checked by:	TR
date:	11/12/11
scale:	1"=10'

sheet number:  
**LSK-2**  
 sheet \_\_\_ of \_\_\_

BUTTERFLY GARDEN PLANT LIST									
Key	Totals	Botanical Name	Common Name	Size	Spacing	Native	Nectar Flowers for	Caterpillar Food Host for	Comments
<b>SHADE TREES</b>									
GTS		Gleditsia traincanthros 'Shademaster'	Shademaster Honeylocust			Yes*		sss	Existing on site
QUB		Quercus bicolor	Swamp White Oak			Yes*		bh, jd, w, rsp, sh	Existing on site
UAP		Ulmus americana 'Princeton'	Princeton American Elm			Yes*		ec, mc	Existing on site
<b>ORNAMENTAL TREES</b>									
CEC	nearby	Cercis canadensis	Eastern Redbud			Yes		sss	Existing nearby
MAC	on site	Malus 'Cardinal'	Cardinal Crabapple			No	ets, rsp, sa, v	rsp, sa,	Existing on site
VIP	nearby	Viburnum prunifolium	Blackhaw Viburnum			Yes			Existing nearby
<b>DECIDUOUS SHRUBS</b>									
BUD	yes	Buddleia davidii	Butterfly Bush		48" o.c.	No	cb, ets, gst, gsf, m, pl, pvs, st		
CSF	on site	Cornus sericea 'Farrow'	Arctic Fire Redosier Dogwood			Yes*	sa, ra		Existing on site
LIB	yes	Lindera benzoin	Spicebush					sbs	
<b>ORNAMENTAL GRASSES</b>									
		Andropogon gerardii 'Dancing Wind'	Dancing Wind Big Bluestem	#1	24" o.c.			les	
		Carex							
		Panicum virgatum 'Shenandoah'	Shenandoah Switch Grass	#1	24" o.c.	Yes*	misc spp not specified	nbd	
<b>PERENNIALS/GROUNDCOVERS</b>									
AGF	yes	Agastache foeniculum 'Blue Fortune'	Blue Fortune Anise Hyssop	#1	18" o.c.	Yes*	b, m, mt, pst, ra, s		
ASS	maybe	Asclepias syriaca	Common Milkweed	10 flat	12" o.c.	Yes	bh, ch, ets, oh, gsf, m, nbd, v	m	
AST	add more	Asclepias tuberosa	Butterfly Weed	#1	15" o.c.	Yes	bh, ch, ets, oh, gsf, pc, m, v	m	New & existing on site
BAP	maybe	Baptisia australis	Blue Wild Indigo	#1	30" o.c.	Yes	cs, dfs, etb, os, st	kb, sss, etb	
DOM	yes	Dodocatheon meadia	Shooting Stars	#1	6" o.c.	Yes	misc spp not specified		
EPA	yes	Echinacea pallida	Pale Purple Coneflower	#1	15" o.c.	Yes	ets, gsf, m, sss, st		
EPU	maybe	Echinacea purpurea	Purple Coneflower	#1	18" o.c.	Yes	cs, w, ets, gsf, ra, st		
EUP	maybe	Eupatorium (Euctrochium) purpurea	Purple Joe Pye Weed	#1	18" o.c.	Yes	gs, ets, pc		
FIR	maybe	Fillipendula rubra	Queen of the prairie	#1	36" o.c.	Yes	st		
GET	maybe	Geum triflorum	Prairie Smoke	#1	12" o.c.	Yes	misc spp not specified		
GEM	maybe	Geranium maculatum	Wild Geranium	#1	15" o.c.	Yes	sk, misc spp not specified		
HEH	maybe	Heliopsis helianthoides	Ox-eye	#1	36"	Yes	cs, pc		
LIA	yes	Liatris aspera	Rough Blazing Star	#1	15" o.c.	Yes	cs, os, ls, m, les, bst, sbs, ets		
LIP	maybe	Liatris pycnostachya	Prairie Blazing Star	#1	18" o.c.	Yes	bst, m, ets		
LUP	yes	Lupinus perenis - Blue Variety	Wild Blue Lupine	#1	9" o.c.	Yes*	kb		
MOF	yes	Monarda fistulosa	Wild Bergamot	#1	30" o.c.	Yes	gst, ets, gsf, af, ra, sss, nbd, st		
PMM	yes	Penstemon 'Midnight Masquerade'	Midnight Masquerade Beardtongue	#1	28" o.c.	Yes*	misc spp not specified	dcs	
PGL	yes	Phlox paniculata 'Grape Lollipop'	Grape Lollipop Garden Phlox	#1	18" o.c.	Yes*	es, sbs, sss		
PPD	maybe	Phlox paniculata 'David'	White Garden Phlox	#1	18" o.c.	Yes*	es, sbs, sss		
RAG	yes	Rudbeckia 'American Gold Rush'	American Gold Rush Blackeyed Susan	#1	18" o.c.	Yes*	b, cs, gsf, m, pc, v	scs	
SOL	maybe	Solidago speciosa	Showy Goldenrod	#1	36" o.c.	Yes	ac, ch, cw, m, ra		
SYM	yes	Symphiotrichum (Aster) novae-angliae	New England Aster	#1	24" o.c.	Yes	cw, m, mt, pl, ra	al, pc, gcs	
VES	maybe	Verbena stricta	Hoary Vervain	#1	18" o.c.	Yes	al, csw, m, sbs, sss		
VNF	yes	Vernonia fasciculata	Common Ironweed	#1	18" o.c.	Yes	es, ets, m, pl		
VIO	yes	Viola Pedata	Bird's Foot Violet	10 flat	6" o.c.	Yes	crs, epe, mf	gsf, af, mf, rf	
ZIA	maybe	Zizia aurea	Golden Alexanders	#1	18" o.c.	Yes	bst		
<b>BULBS</b>									
APS	yes - 50	Allium afatanunse 'Purple Sensation'	Purple Sensation Ornamental Onion	Top size bulb	see plans	No	misc spp not specified		Plant in groups of 5; 6-8" deep; 8" o.c.; 24" dia hole

\* Cultivar, or variety of native plant

research Sources: North American Butterfly Association, Morton Arboretum, Field Museum, various grower catalogs and other miscellaneous sources from internet

Plant Sources:  
Midwest Groundcovers - primary source  
Intrinsic Perennial Gardens - secondary  
Mariani Plants - secondary  
Other possible suppliers: Mondale, Twixwood, Pizzo (for plugs if not available in size)

Symbol	Key to Butterfly Names
<b>bold = common in Illinois, Chicagoland Area</b>	
ac	American Copper
af	Aphrodite Fritillary
al	American Lady
b	Blues spp.
bh	Banded Hairstreak
bst	Black Swallowtail
c	Comma spp.
cb	Common Buckeye
cor	Coral Hairstreak
ch	Common Hairstreak
crs	Common Roadside Skipper
cs	Clouded Sulphur
csw	Common Sootywing
cw	Cabbage White
cwn	Common Wood Nymph
dfs	Dogface Sulphur
dcs	Dotted Checkerspot
ec	Eastern Comma
epe	Eastern Pine Elfin
etb	Eastern Tailed Blue
ets	Eastern Tiger Swallowtail
fsm	Fawn Shinx Moth
fs	Fiery Skipper
gcs	Gorgone Checkerspot
gr	Gray Comma
gsf	Great Spangled Fritillary
gs	Grass Skipper
gst	Giant Swallowtail
hs	Hobomok Skipper
jd	Juvenal's Duskwing
kl	Karner Blue
les	Leonard's Skipper
ls	Little Sulphur
m	Monarch
mc	Mourning Cloak
mf	Meadow Fritillary
mt	Milbert's Tortoiseshell
nbh	Norther Broken Dash
oh	Olive Hairstreak
om	Olympia Marble
os	Orange Sulphur
pc	Pearl Crescent
pl	Painted Lady
ps	Peck's Skipper
pvs	Pipevine Swallowtail
qm	Question mark
ra	Red Admiral
rsp	Red Spotted Purple
s	Sulphur spp.
sa	Spring Azure
sbs	Spicebush Swallowtail
scs	Silvery Checkerspot
sh	Striped Hairstreak
sk	Skippers spp.
sss	Silver Spotted Skipper
st	Swallowtails
sty	Satyr spp.
v	Viceroy

product  
architecture + design

811 w. evergreen ave.  
suite 405  
chicago, IL 60642

ph: (312) 202-0701  
fax: (866) 857-7265

Revision	Rev. Date
Design Development	12/12/2011
Final Permit Submittal	12/12/2011
Issue For P&I	12/12/2011
Issue For Permit	12/12/2011
Issue For Bid	12/12/2011
10/12	12/12/2011
Issue For Review	12/12/2011



drawing:  
Conceptual Plant List

project:  
linda sokol francis  
brookfield library  
3541 park avenue,  
brookfield, IL 60513

sheet number:	406
sheet title:	406
approved by:	406
drawing scale:	1" = 1'-0"
date issued:	12/12/2011

sheet number:

LSK-4

sheet \_\_\_ of \_\_\_

Revision:	Rev. No.:
Date:	1/23/2013
Drawn By:	1/23/2013
Check By:	1/23/2013
Scale:	1/2" = 1'-0"
Sheet No.:	1 of 1
Project No.:	12-00003
Client:	Brookfield Library
Location:	3541 Park Avenue, Brookfield, IL



drawing:  
Conceptual Plant Images

project:  
linda sokol francis  
brookfield library  
3541 park avenue,  
brookfield, il 60513

Sheet number:	105
Drawn by:	1/23/2013
Checked by:	1/23/2013
Scale:	1/2" = 1'-0"
Sheet No.:	1 of 1

sheet number:

SHRUBS



BUDDLEIA 'FUGSTER PERIWINKLE'  
FUGSTER PERIWINKLE BUTTERFLYBUSH



LINDERA BENZOIN  
SPICEBUSH

GRASSES



ANDROPOGON GERARDII 'DANCING WIND'  
DANCING WIND BIG BLUESTEM



CAREX STRICTA  
TUSSOCK SEDGE

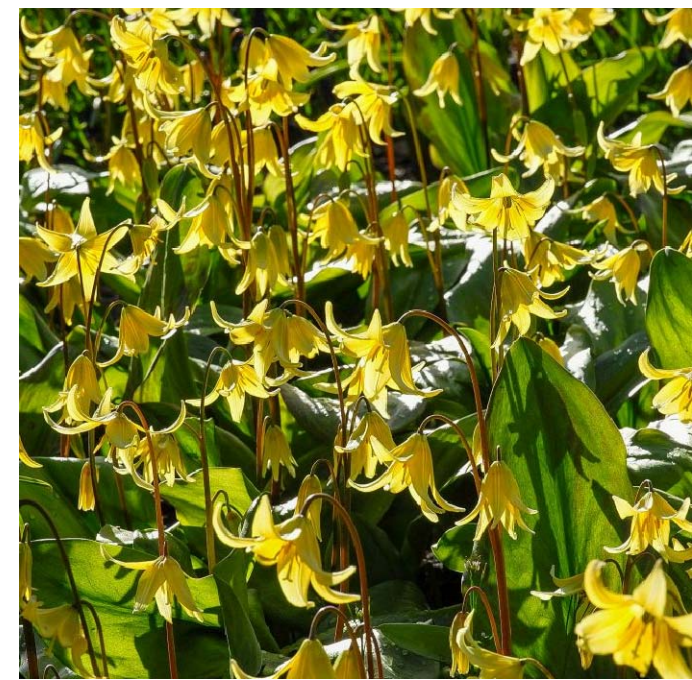


PANICUM VIRGATUM 'SHENANDOAH'  
SHENANDOAH SWITCHGRASS

BULBS



ALLIUM 'PURPLE SENSATION'  
PURPLE SENSATION ORNAMENTAL ONION



ERYTHRONIUM PAGODA  
PAGODA DOGTOOTH VIOLET



NARCISSUS 'BABY BOOMER'  
BABY BOOMER NARCISSUS

PERENNIALS



AGASTACHE FOENICULUM 'BLUE FORTUNE'  
BLUE FORTUNE HYSSOP



ASCLEPIAS SYRIACA  
COMMON MILKWEED



ASCLEPIAS TUBEROSA  
BUTTERFLYWEED



BAPTISIA AUSTRALIS  
BLUE FALSE INDIGO



COREOPSIS VERTICILLATA 'GOLDEN SHOWER'  
GOLDEN SHOWER TICKSEED



DODECATHEON MEADII  
SHOOTING STAR



ECHINACEA PALLIDA  
PALE PURPLE CONEFLOWER



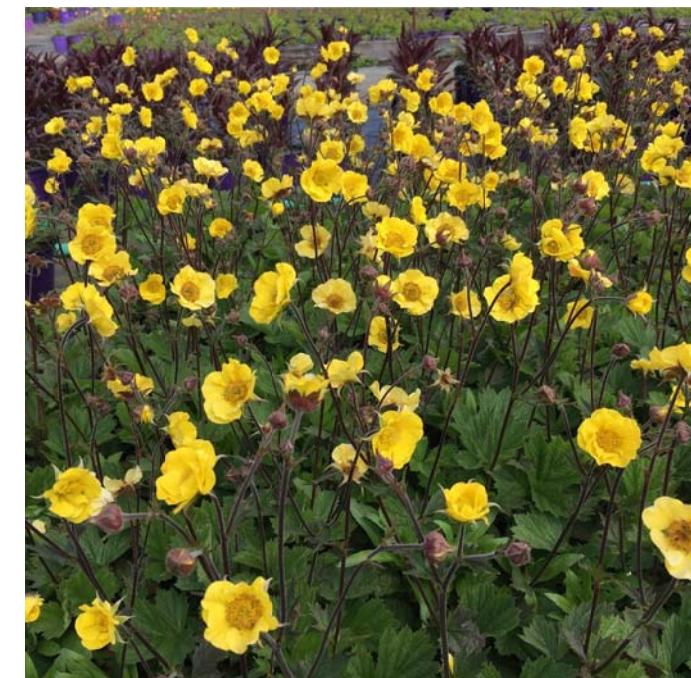
EUPATORIUM-EUTROCHIUM PURPUREUM  
SWEET JOE PYE WEED



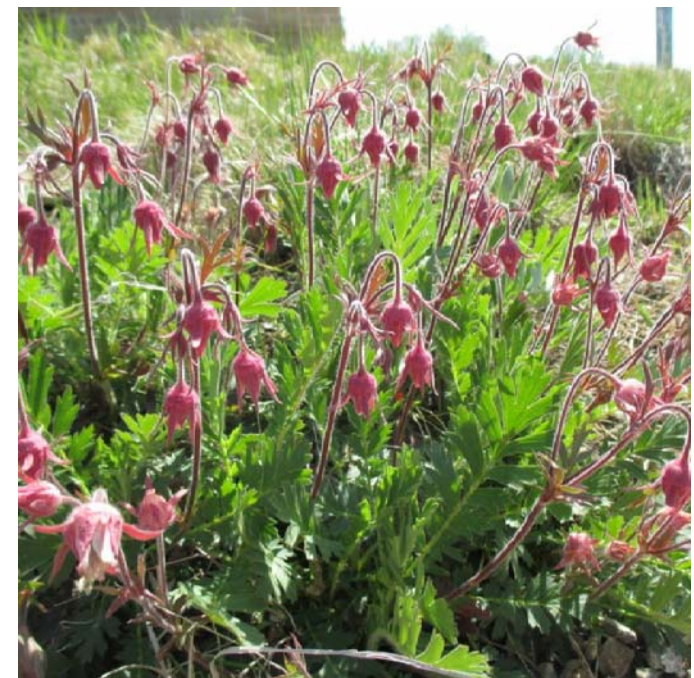
FILIPENDULA RUBRA  
QUEEN OF THE PRAIRIE



GERANIUM MACULATUM  
WILD GERANIUM



GEUM 'LIMONCELLO'  
LIMONCELLO AVENS



GEUM TRIFLORUM  
PRAIRIE SMOKE



HELIOPSIS HELIANTHOIDES 'TUSCAN SUN'  
TUSCAN SUN OXEYE SUNFLOWER



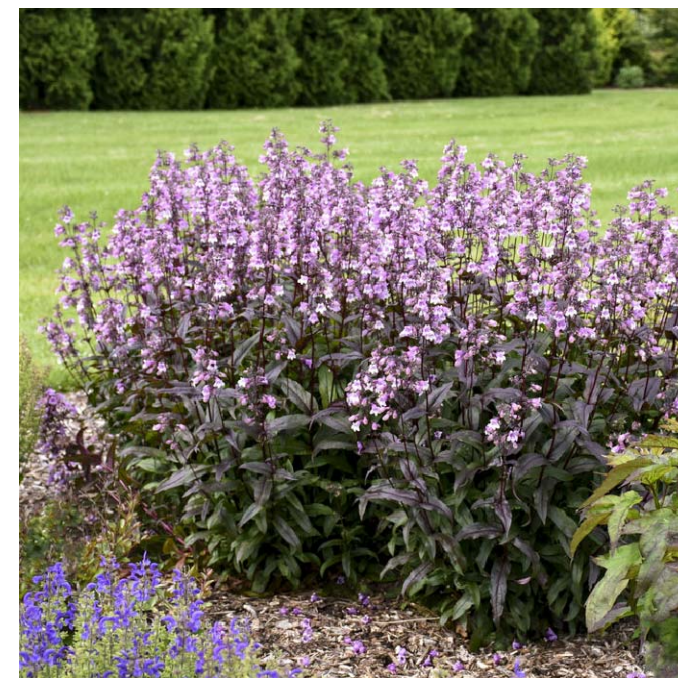
LIATRIS ASPERA  
ROUGH BLAZING STAR



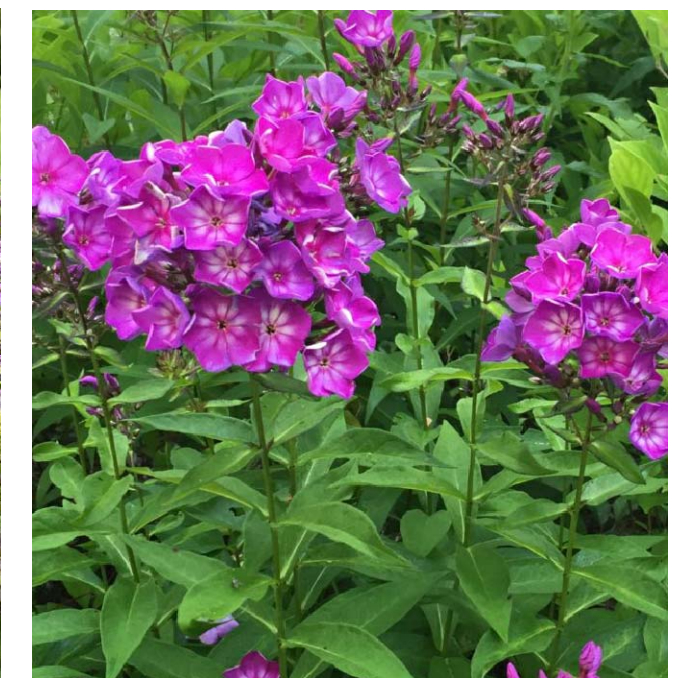
LUPINUS PERENNIS  
PERENNIAL LUPINE



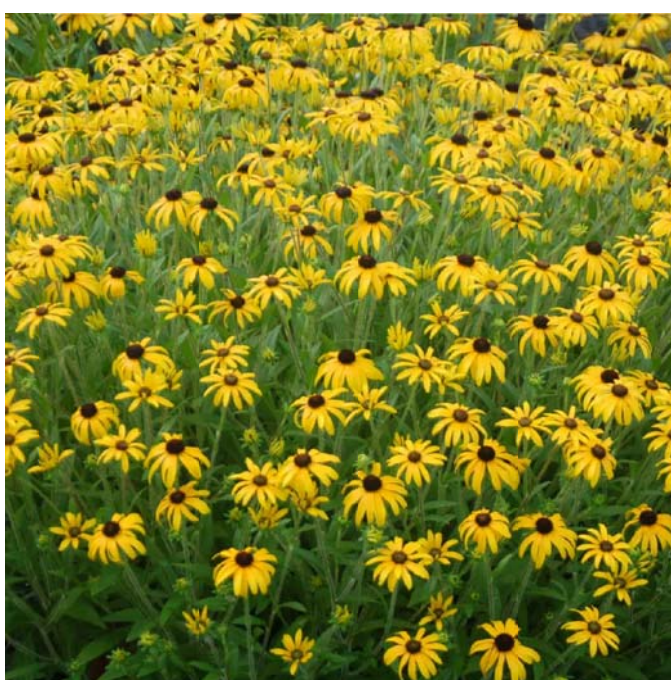
MONARDA FISTULOSA  
BEE BLAM



PENSTEMON 'MIDNIGHT MASQUERADE'  
MIDNIGHT MASQUERADE BEARDSTONGUE



PHLOX PANICULATA 'GRAPE LOLLIPOP'  
GRAPE LOLLIPOP GARDEN PHLOX



RUDBECKIA X 'AMERICAN GOLD RUSH'  
AMERICAN GOLD RUSH BLACK-EYED SUSAN



SOLIDAGO RUGOSA 'FIREWORKS'  
FIREWORKS GOLDENROD



SYMPHORICARPOS NOVAE-ANGLIAE 'PURPLE DOME'  
PURPLE DOME ASTER



VERBENA STRICTA  
HOARY VERVAIN



VERNONIA FASCICULATA  
COMMON IRONWEED



VIOLA PEDATA  
BIRDFOOT VIOLET



ZIZIA AUREA  
GOLDEN ALEXANDER